

CIGARETTE SMOKING PREVALENCE

HOW WILL IT BE MEASURED?



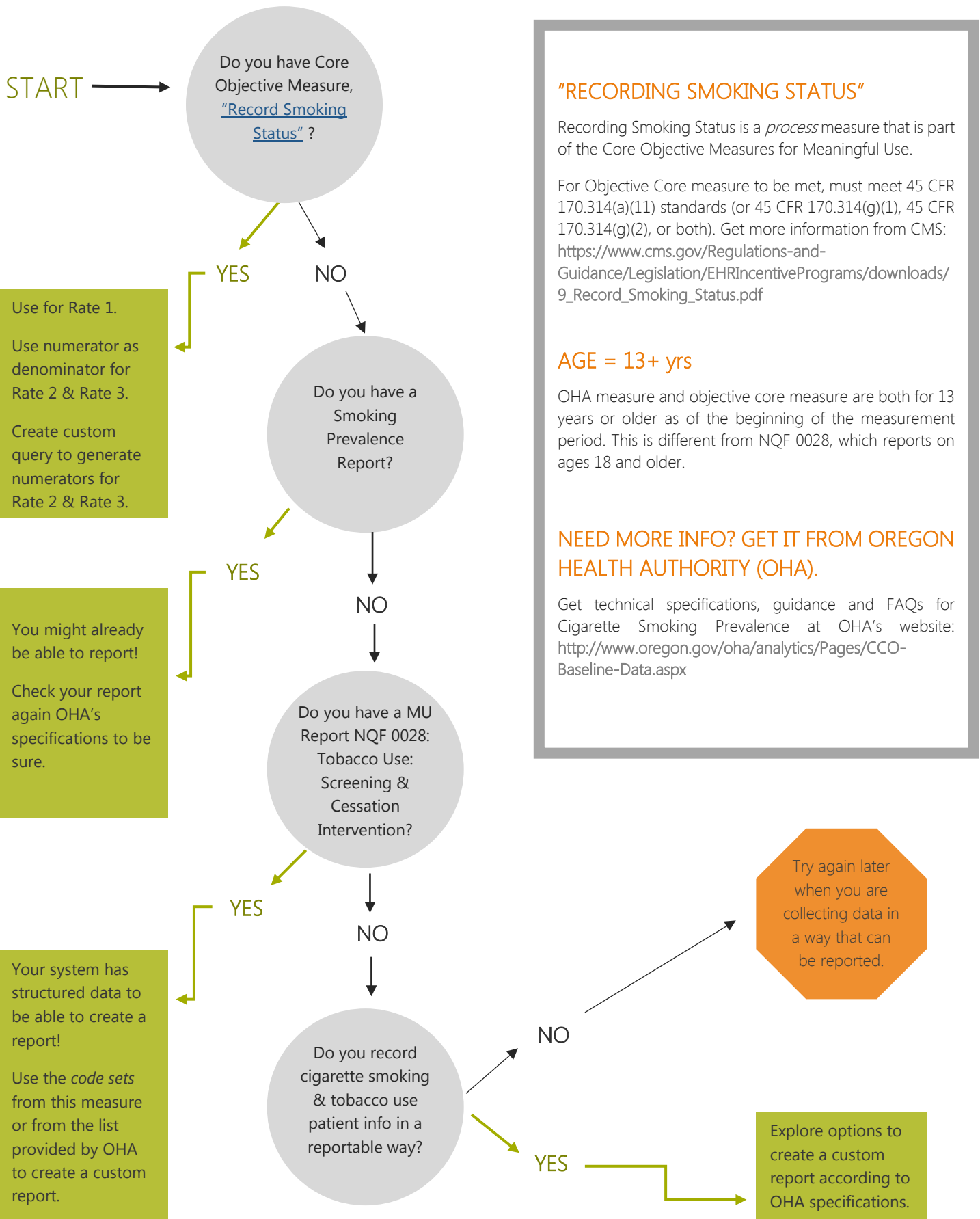
3 Rates = 4 Measure Components...

OHA description of measure components:		Rate 1	Rate 2	Rate 3
A	Unique members 13 years old or older by the beginning of the measurement year , who had a qualifying visit with the provider during the measurement period.	Denominator		
B	Unique members age 13 years or older who had a qualifying visit with the provider during the measurement period, who have their smoking and/or tobacco use status recorded as structured data.	Numerator	Denominator	Denominator
C	Of patients in the Rate 2 denominator, those who are cigarette smokers.		Numerator	
D	Of patients in the Rate 3 denominator, those who are cigarette smokers and/or tobacco users.			Numerator
		= B/A	= C/B	= D/B

NOTE: These summaries are meant to make the measure information easier to understand. They do not provide all of the information needed for reporting and are **subject to change**. Oregon Health Authority makes final decisions on all technical specifications. Always check OHA's website for the most up-to-date technical specifications and details about the measure.

CIGARETTE SMOKING PREVALENCE

CAN YOUR CLINIC REPORT THIS OHA MEASURE?



"RECORDING SMOKING STATUS"

Recording Smoking Status is a *process* measure that is part of the Core Objective Measures for Meaningful Use.

For Objective Core measure to be met, must meet 45 CFR 170.314(a)(11) standards (or 45 CFR 170.314(g)(1), 45 CFR 170.314(g)(2), or both). Get more information from CMS: https://www.cms.gov/Regulations-and-Guidance/Legislation/EHRIncentivePrograms/downloads/9_Record_Smoking_Status.pdf

AGE = 13+ yrs

OHA measure and objective core measure are both for 13 years or older as of the beginning of the measurement period. This is different from NQF 0028, which reports on ages 18 and older.

NEED MORE INFO? GET IT FROM OREGON HEALTH AUTHORITY (OHA).

Get technical specifications, guidance and FAQs for Cigarette Smoking Prevalence at OHA's website: <http://www.oregon.gov/oha/analytics/Pages/CCO-Baseline-Data.aspx>